

RF Duplexer 850MHz / 40W / IP67



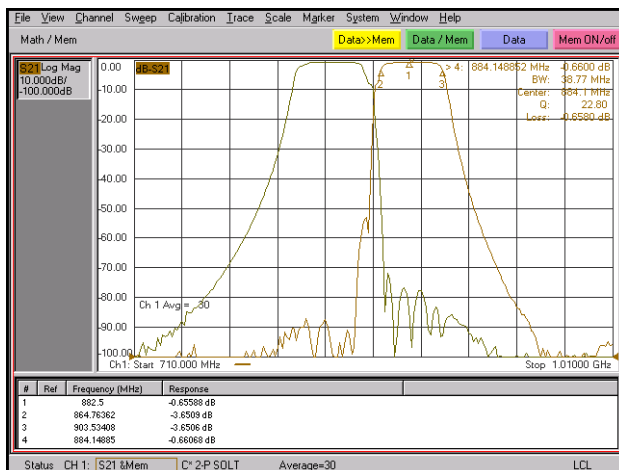
This is a cavity outdoor duplexer for 850 MHz GSM / UMTS / LTE Band 5 operation.

You can use it to operate a GSM BTS (like our sysmoBTS) or any other BTS/NodeB/eNodeB with separate Rx and Tx ports at a single antenna.

All connectors are N (female).

It can support up to 40W of RF power

RX/TX Attenuation Diagram



Beyond this product

sysmocom not only offers this product, but a variety of other products and services, such as

- **sysmoNITB starterkit** complete ready to run 2G, 3G5 and/or 4G solution for lab testing
- **Cellular Network Infrastructure** a comprehensive suite of elements for 3GPP cellular networks
- **sysmoOCTSIM / sysmoQMOD** solution for remote SIM operation for cellular modems
- **SIMtrace2** debug and trace SIM card communication
- **sysmoSIM** SIM cards, pre-programmed and with custom printing
- **sysmoBTS** range from 1TRX 0.2W to 2TRX 2x10W
- extensive portfolio of **support contracts** for all sysmocom Products
- **training services** for installation, network deployment, operation
- **vendor-agnostic integration** and inter-operation with other vendor RAN and Core Network products
- **variety of sectorized and omni-directional antennas** as well as **RF cabling and accessories**

Custom-tailored GSM solutions

sysmocom is not just another RAN vendor with a fixed product portfolio. All our products are based on Open Source software components, permitting customization both by sysmocom as well as the customer.

Access to the source code is key in enabling our customers to create products and services outside the constraints of existing, standardized GSM protocols, interfaces or procedures. Any aspect of our products can be modified according to customer needs.

Contact Information

We appreciate inquiries from end-users, operators as well as retailers.

sysmocom – systems for mobile communications GmbH
Siemensstr. 26a, 10551 Berlin, GERMANY

Phone: +49-30-60987128-0
Fax: +49-30-60987128-9
e-mail: info@sysmocom.de
web: <http://sysmocom.de/>

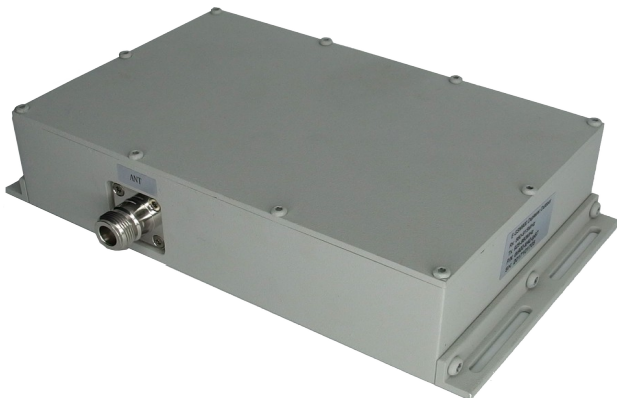
RF Duplexer 850MHz / 40W / IP67

Specifications

	TX	RX
Pass Band	869 - 894 MHz	824 - 849 MHz
Insertion Loss	1.0 dB	1.0 dB
Passband Ripple	0.8 dB	0.8 dB
Rejection	60 dB @ 80-850 MHz 60 dB @ 1-3 GHz	60 dB @ 80-800 MHz 60dB @ 1-3 GHz
Return Loss	minimum 20 dB	
Impedance	50 Ohms	
Power	40 W average RF power	
Temperature	-20 to 65 Centigrade	
Dimensions	176x72x51 mm	
Weight	1370 g	
IP-Rating	IP67	

Order Code

dx850-kt40-ip67



sysmocom – systems for mobile communications GmbH
Siemensstr. 26a, 10551 Berlin, GERMANY

Phone: +49-30-60987128-0
Fax: +49-30-60987128-9
e-mail: info@sysmocom.de
web: <http://sysmocom.de/>